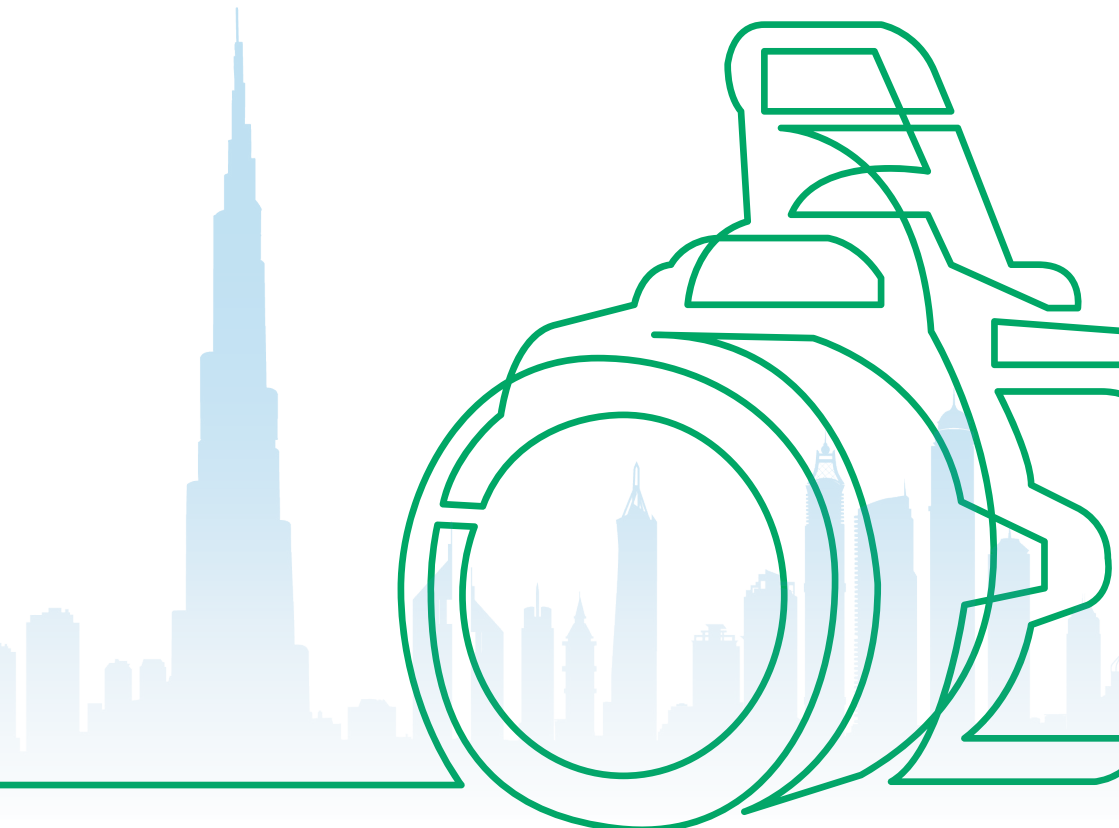


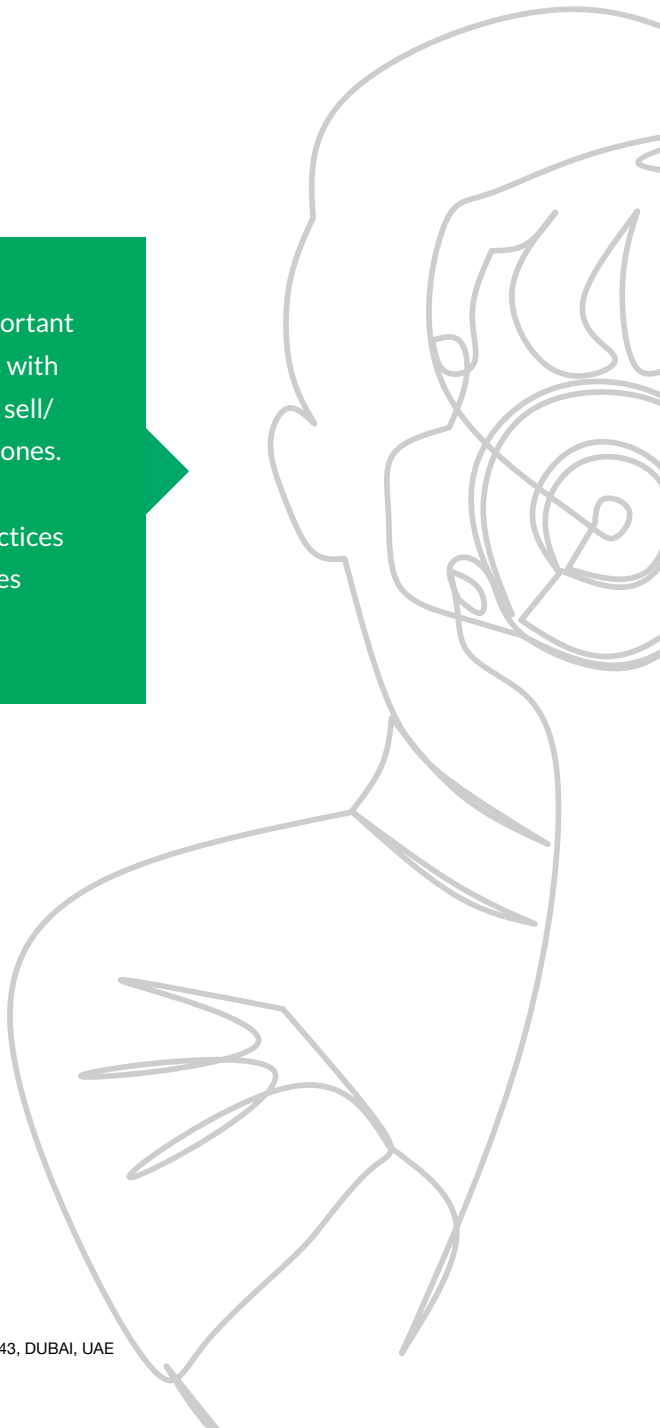


## Images Quality Standards



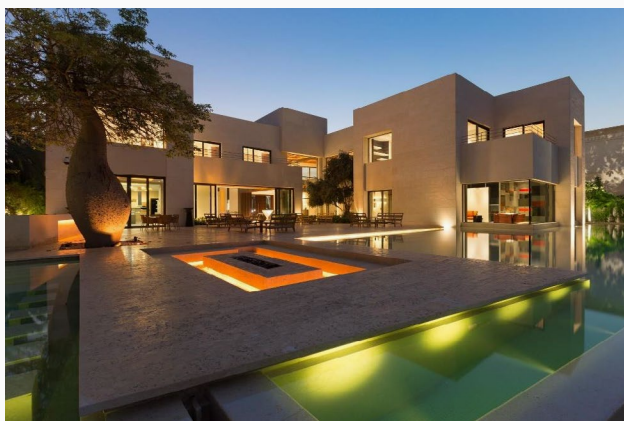
High quality images play an important role in the listing health, listings with high quality images are likely to sell/rent faster than the low quality ones.

This document has the best practices and some examples of the images rejections reasons.



# GENERAL GUIDELINES

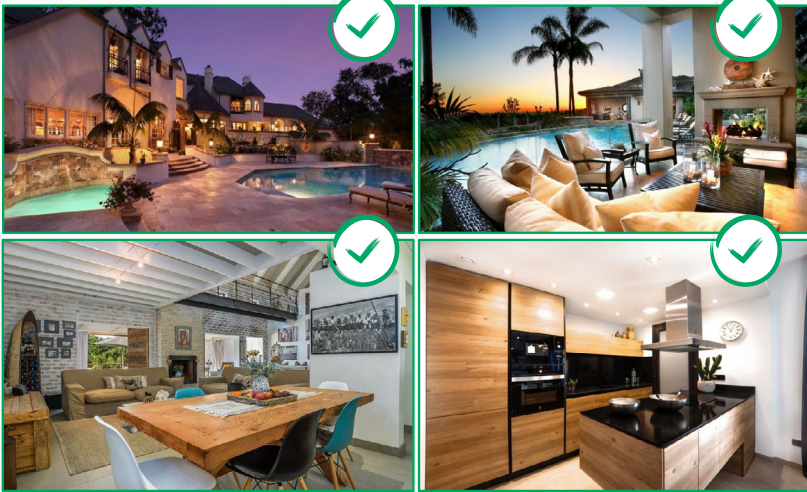
- Image resolution should be at least 800x600 pixels.
- Images should be in Landscape mode.
- Images should be relative to the property.
- No duplicated images are allowed.
- Collage Images are not allowed.
- Irrelevant images are not allowed.
- Watermark should be a transparent and not hiding the photo.
- Blurred or Tilted images are not allowed.
- No contact details or banners, tags, text or frame is allowed on the images.
- No copied or Google photos are allowed.
- No stock images/Computerized images are allowed for Checked/TruCheck listings.



## 1. DUPLICATE IMAGES

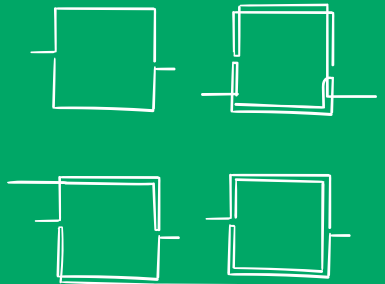
If one of the images is identical or slightly different or the same image with a zoom in zoom out will be rejected by our QA team.





## 2. COLLAGE IMAGES

Images that has the collage style that combines more than one photo in one frame, will be rejected by our QA team





### 3. CONTACT DETAILS

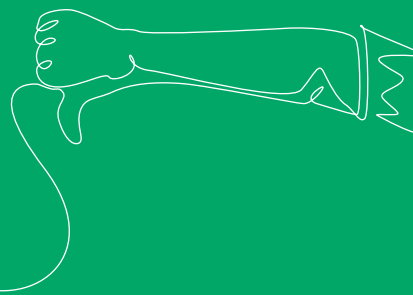
Having any sort of contact details on the images defeats the purpose of the lead tracking system on the portal so the images having contact details such as agent's Numbers Emails Agency website will be rejected





## 4. IRRELEVANT IMAGES

Images that irrelevant to the property like the nearby Fuel pump, Bus stop or any commercial area will be rejected by QA team.





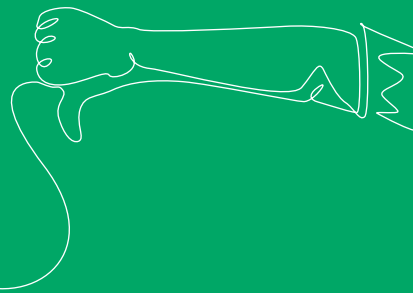
**TILTED**



**BLURRED**

## **5. BLURRED/TILTED IMAGES**

Images that looks tilted or not level or blurred will be rejected by QA team.





Portrait Revert Resolution



## 6. LOW RESOLUTION, PORTRAIT IMAGE

- Image resolution must be at least 800x600 pixels, Images with lower resolution will be rejected.
- Only images in landscape mode are accepted, the images in Portrait mode will be rejected by QA team.





## 7. WATERMARK

Images that has solid or big sized watermark that hide part of the actual image will be rejected by our QA team





## 8. IMAGES WITH BANNER, TAGS OR TEXT

Images that has Text, Banner or tags will be rejected by our QA team.

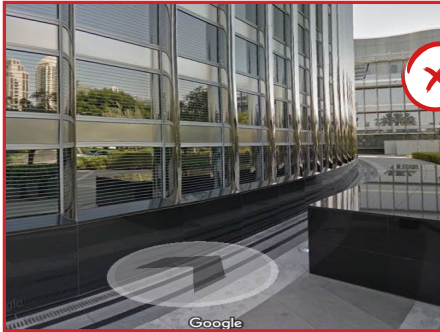




## 9. IMAGES WITH PHOTO FRAME & PHOTOSHOP EFFECT

Images that has a frame or any photoshop effect will rejected by our QA team.

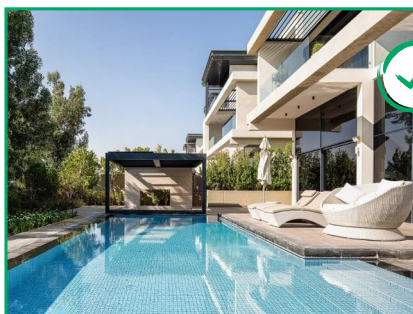
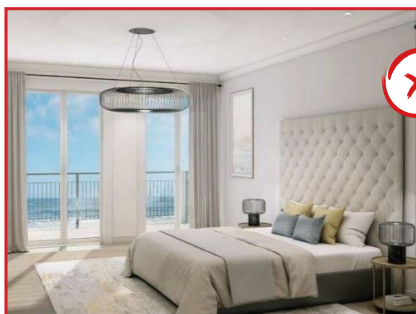




## 10. GOOGLE OR COPIED IMAGES

Images that are copied from google maps or taken from any other Real Estate agency will be rejected by QA team.





## 11. STOCK / COMPUTERIZE IMAGES

Stock or Computerized images will be rejected if the listing is requested for **Checked/TruCheck**, all Images should be original to be marked as **TruCheck**.

