

CONSTRUCTION  
UPDATE  
JUNE 2025

---

SOBHA  
REALTY



# CREST

GRANDE



## DESIGN *to* COMPLETION

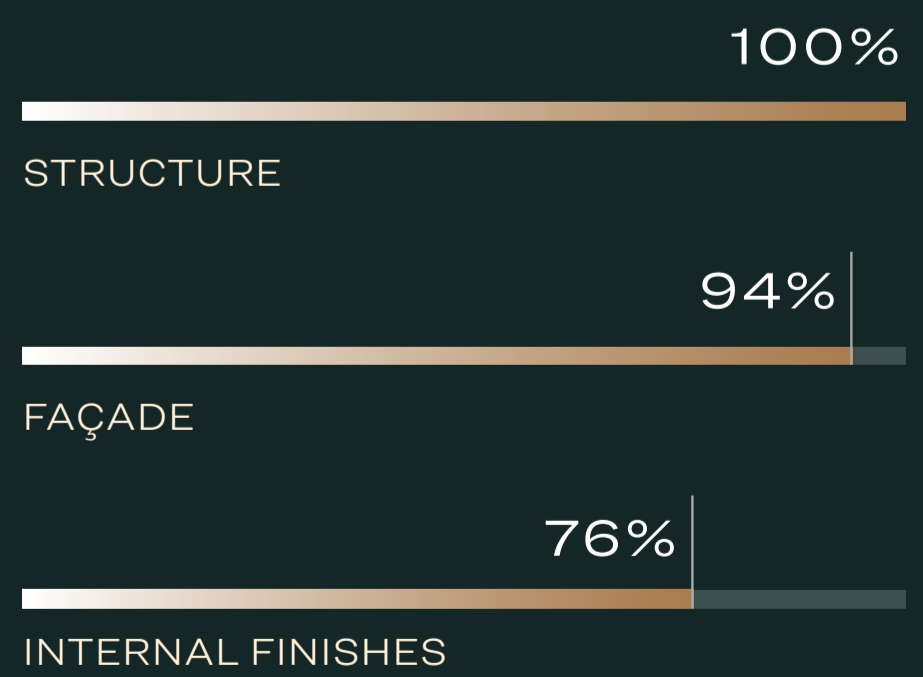
### Dear VALUED CUSTOMER,

We are excited to provide you with the latest update on the construction of your dream home at The Crest Grande, Sobha Hartland.

Construction of the project is proceeding favourably well.

The structural work is now complete across all towers. Building exterior envelopes works in progress up to level 42 in tower A, up to level 36 in tower B and level 42 in tower C. MEP works, floor tiling & false ceiling and internal painting works in the apartments are in progress along with staircase finishing & service room tiling area works and Joinery works finishes.

#### DEVELOPMENT PROGRESS



**SOBHA**  
REALTY





# CREEK VISTAS HEIGHTS



## DESIGN *to* COMPLETION

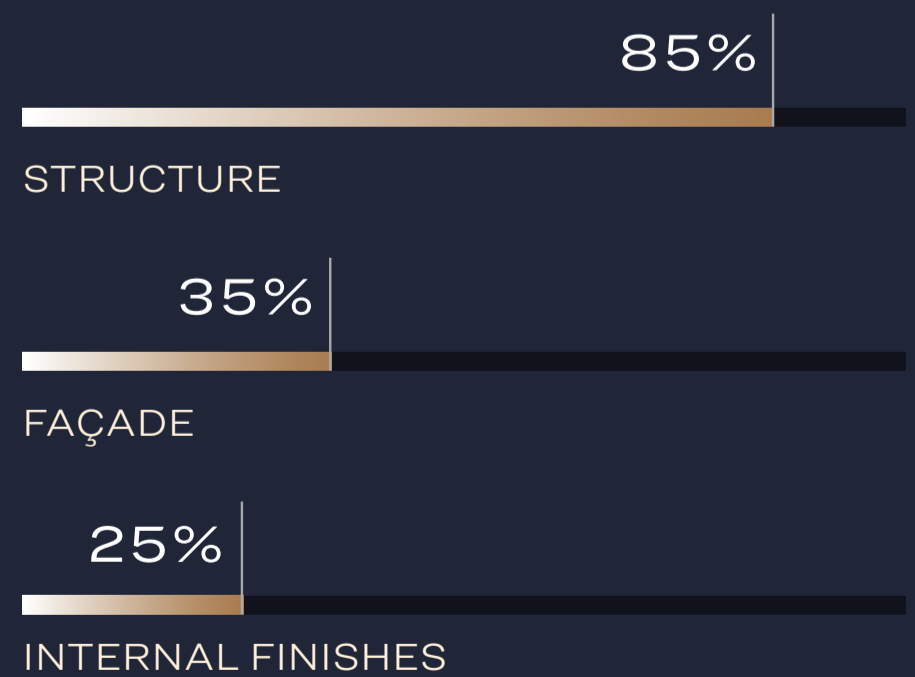
### Dear VALUED CUSTOMER,

We are excited to provide you with the latest update on the construction of your dream home at The Creek Vista Heights, Sobha Hartland.

Construction of the project is proceeding favourably well.

The slab works at level 51 in Tower A is completed & level 49 in Tower B along with slab works in central podium are in progress. Building external envelope works are in progress in Tower A & Tower B. Blockwork and plaster works, high-level MEP and wet area works along with false ceiling & tiling works are in progress.

### DEVELOPMENT PROGRESS



# SOBHA REALTY





# VERDE

BY SOBHA



## DESIGN *to* COMPLETION

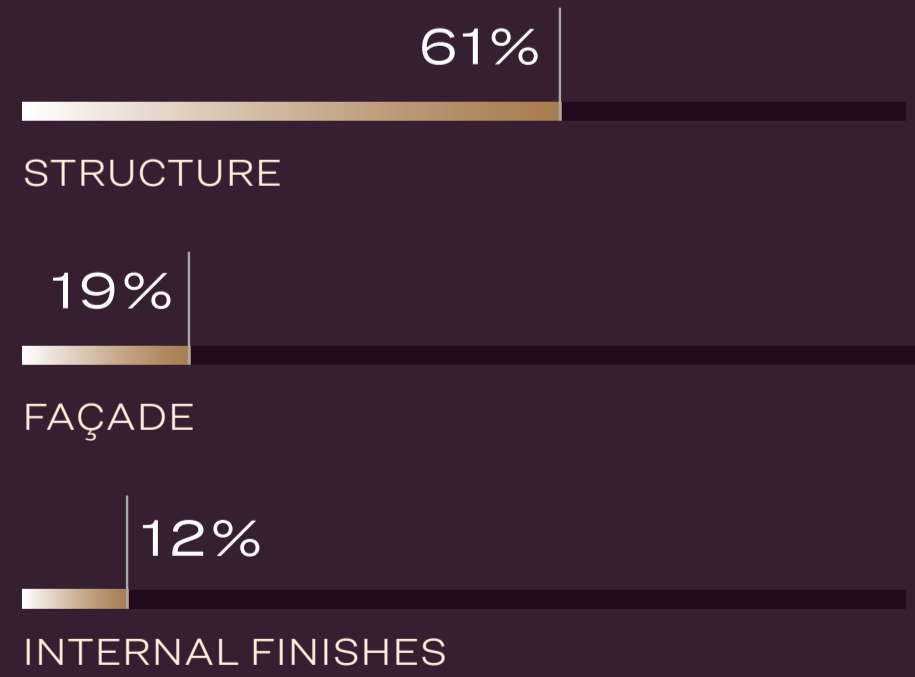
### Dear VALUED CUSTOMER,

We are excited to provide you with the latest update on the construction of your dream home at the elegant Verde by Sobha.

Construction of the project is proceeding favourably well.

Level 40 slab works in progress. Building envelops works are in progress. Internal finishes including MEP high level, blockwork, plaster and wet area works are in progress.

#### DEVELOPMENT PROGRESS



# SOBHA

REALTY





**DESIGN *to* COMPLETION**

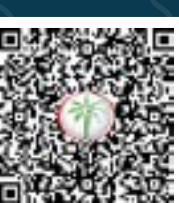
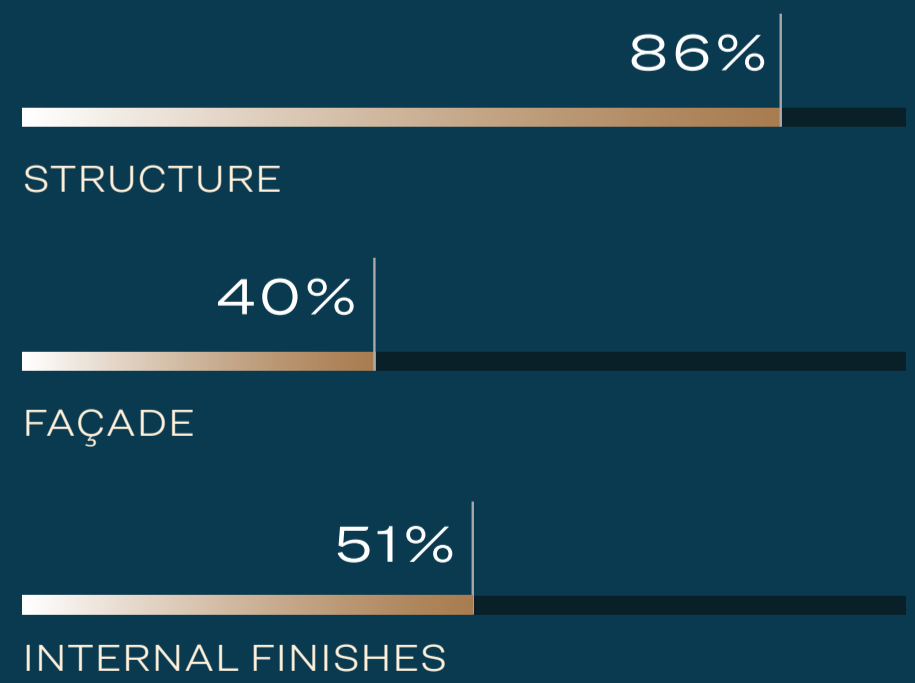
*Dear*  
**VALUED CUSTOMER,**

We are excited to provide you with the latest update on the construction of your dream home at the elegant Waves Opulence.

Construction of the project is proceeding favourably well.

Upper roof slab works are completed. Canopy along with façade works are in progress. Blockwork & plaster, high-level MEP and wet area works are in progress.

**DEVELOPMENT  
PROGRESS**





SOBHA ONE



## DESIGN *to* COMPLETION

### Dear VALUED CUSTOMER,

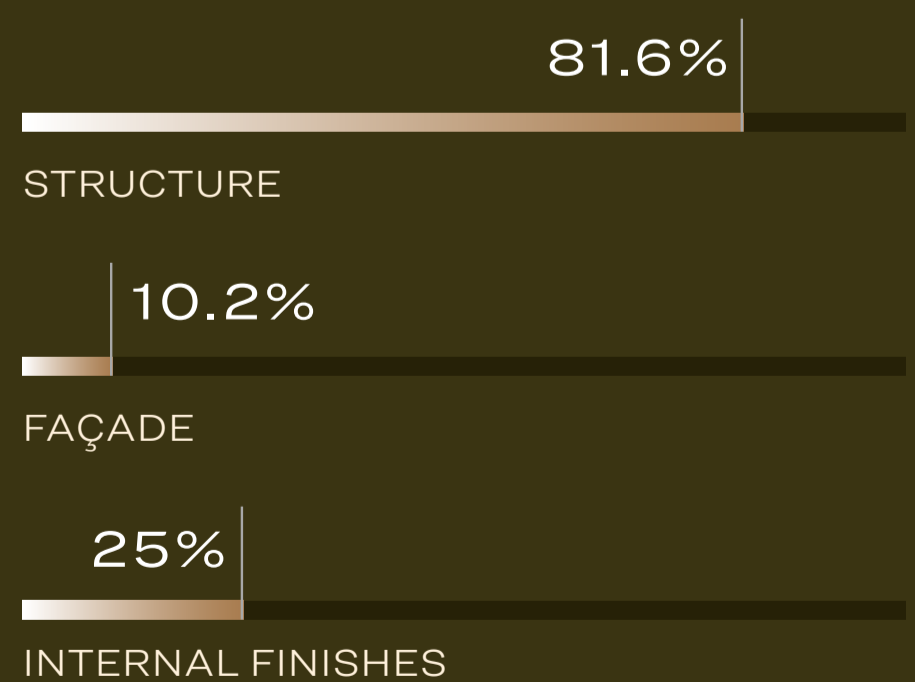
We are excited to provide you with the latest update on the construction of your dream home at Sobha One.

Construction of the project is proceeding favourably well.

Structural work for Tower A, has been completed till Level 49, while Tower B is till Level 42, Level 35 for Tower C, till Level 35 for Tower D and roof level completed for Tower E along with link towers & podium structure works in progress. Lift, sliding door & hinged door installation along with window wall installation and ACP works in progress.

Slab conduiting works in progress as per slab casting. Blockwork and plastering works in progress. High-level MEP works, and wet area works are in progress in Tower A, B, C, D and E. Tiling works in progress.

### DEVELOPMENT PROGRESS



SOBHA REALTY





# SOBHA HARTLAND II

ESTATES



## DESIGN *to* COMPLETION

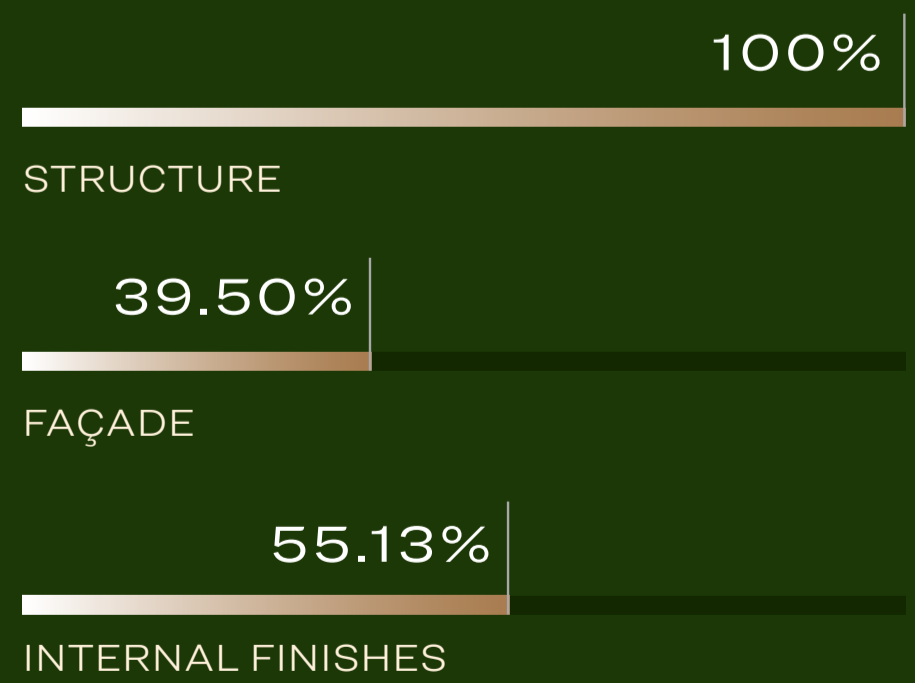
### Dear VALUED CUSTOMER,

We are excited to provide you with the latest update on the construction of your dream villa at the luxurious Sobha Hartland II.

Construction of the project is proceeding favourably well for villa series V113 to V123, V126 to V147 & V150 to V159.

Superstructure and 43/43 upper roof slab completed. Façade works are in progress. MEP works and plastering with false ceiling works, tiling, marble and painting are in progress. External works are also in progress.

### DEVELOPMENT PROGRESS

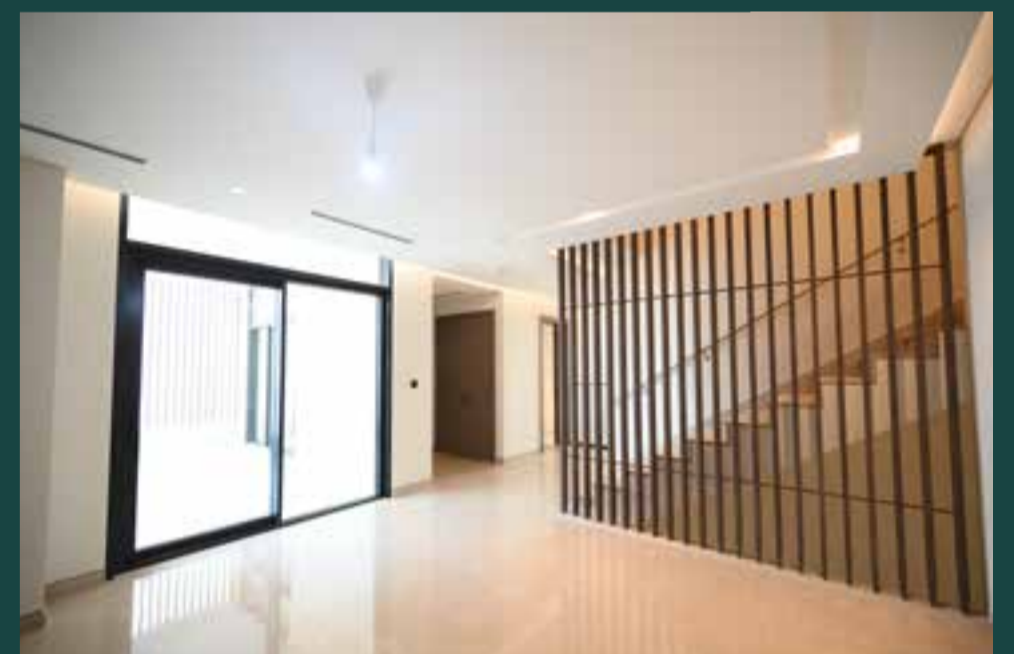


## SOBHA REALTY





# SOBHA HARTLAND II ESTATES



## DESIGN *to* COMPLETION

### Dear VALUED CUSTOMER,

We are excited to provide you with the latest update on the construction of your dream villa at the luxurious Sobha Hartland II.

Construction of the project is proceeding favourably well for villa series V101 to V110, V112, V124, V125, V148, V149 & V160.

Structural works are in progress. Façade and internal finishes work are yet to commence.

### DEVELOPMENT PROGRESS

84.61%

STRUCTURE

# SOBHA REALTY





# SOBHA HARTLAND II

ESTATES



## DESIGN *to* COMPLETION

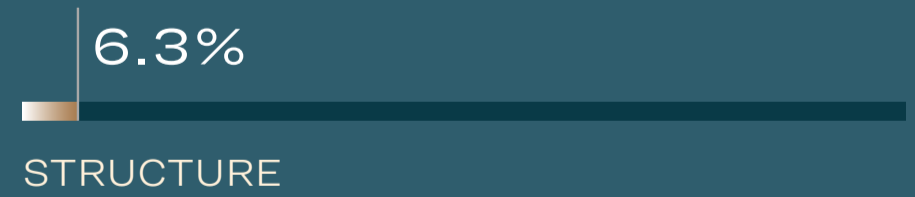
### Dear VALUED CUSTOMER,

We are excited to provide you with the latest update on the construction of your dream villa at the luxurious Sobha Hartland II.

Construction of the project is proceeding favourably well for villa series V203 to V206, V210 to V216, V225 to V243, V247 to V251.

Substructural works are in progress. Façade and internal finishes work are yet to commence.

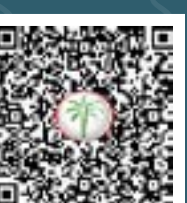
### DEVELOPMENT PROGRESS



STRUCTURE

# SOBHA

REALTY





# SOBHA SEAHAVEN



## DESIGN *to* COMPLETION

### Dear VALUED CUSTOMER,

We are excited to provide you with the latest update on the construction of your dream home at the luxurious Sobha SeaHaven.

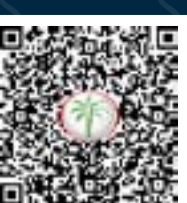
Tower A's P6 slab is work in progress along with P8 & P9 verticals. Tower B, P2 slab work in progress along with P4 & P5 verticals. Tower C, P1 slab in progress & P3 to P4 verticals in progress. Façade and internal finishes work are yet to commence.

### DEVELOPMENT PROGRESS

27%

STRUCTURE

# SOBHA REALTY



# 330 RIVERSIDE CRESCENT



## DESIGN *to* COMPLETION

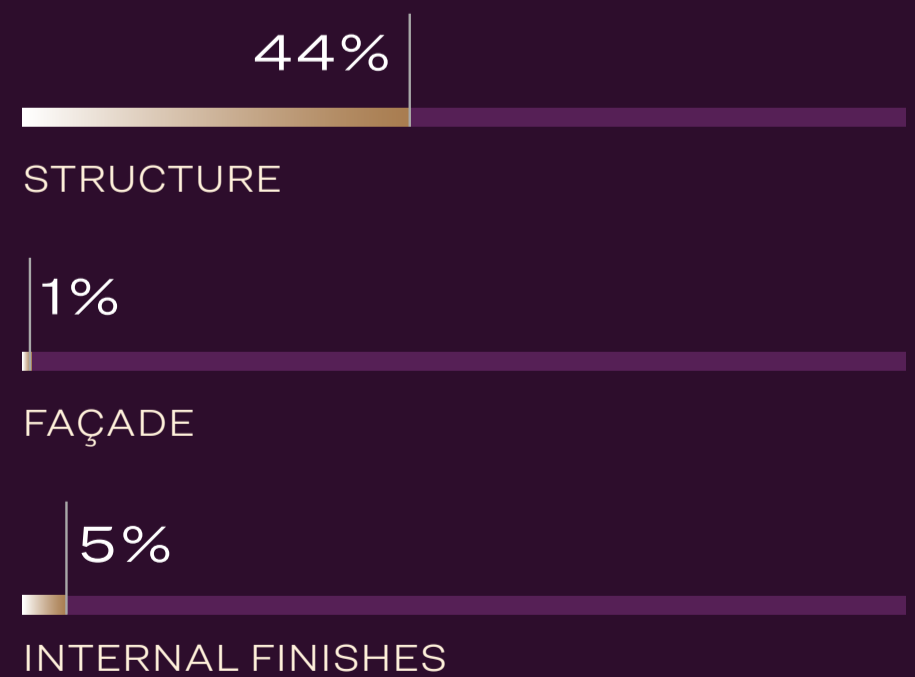
Dear  
**VALUED  
CUSTOMER,**

We are excited to provide you with the latest update on the construction of your dream home at 330 Riverside Crescent.

Construction of the project is proceeding favourably well.

Level 22 slab work and podium raft completed. Façade, blockwork & plaster and wet area works are in progress.

DEVELOPMENT  
PROGRESS



**SOBHA**  
REALTY



# 320 RIVERSIDE CRESCENT



## DESIGN *to* COMPLETION

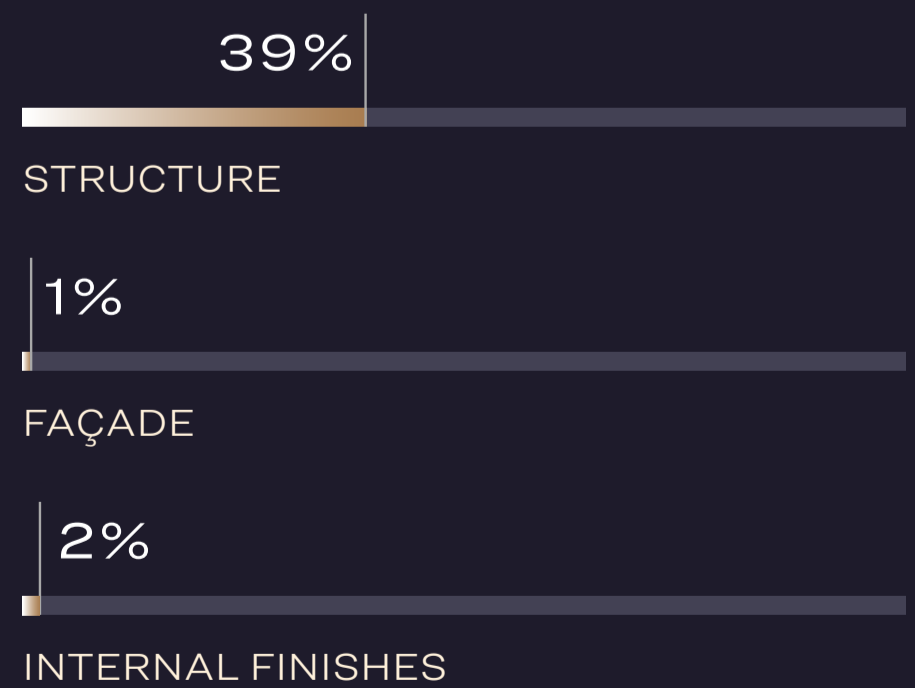
### Dear VALUED CUSTOMER,

We are excited to provide you with the latest update on the construction of your dream home at 320 Riverside Crescent.

Construction of the project is proceeding favourably well.

Level 18 slab along with podium raft work completed. Façade works are in progress. Blockwork & plaster and wet area works are in progress.

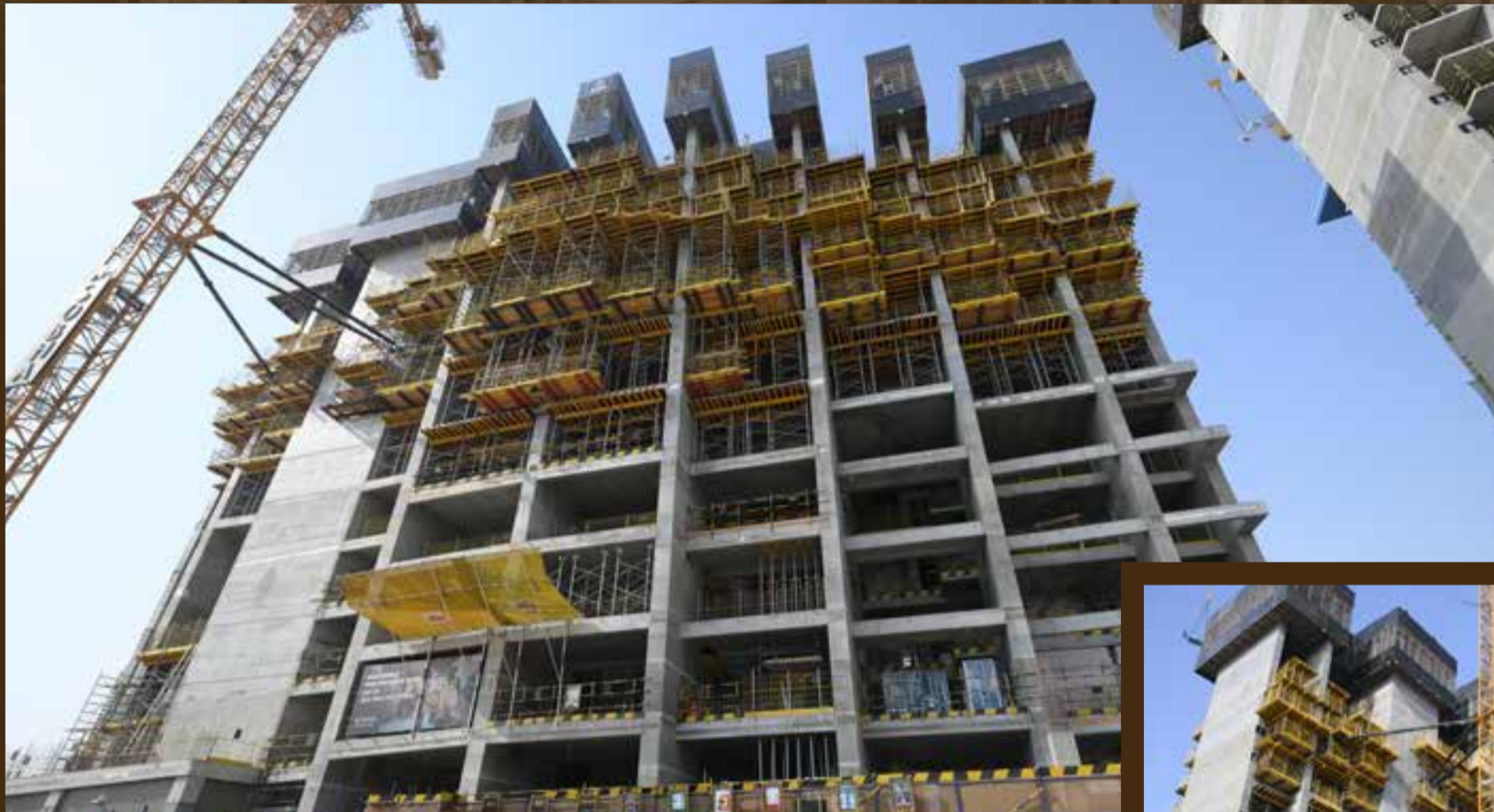
### DEVELOPMENT PROGRESS



**SOBHA**  
REALTY



# 310 RIVERSIDE CRESCENT



DESIGN *to*  
COMPLETION

Dear  
**VALUED  
CUSTOMER,**

We are excited to provide you with the latest update on the construction of your dream home at 310 Riverside Crescent.

Construction of the project is proceeding favourably well with Level 9 slab work completed. Façade and internal finishes work are yet to commence.

DEVELOPMENT  
PROGRESS

27%

STRUCTURE

**SOBHA**  
REALTY



# 340 RIVERSIDE CRESCENT



## DESIGN *to* COMPLETION

### Dear VALUED CUSTOMER,

We are excited to provide you with the latest update on the construction of your dream home at 340 Riverside Crescent.

Construction of the project is proceeding favourably well with Level 13 slab work in progress while Level 14 and 15 verticals in progress.

Works are yet to commence for the façade. Blockwork & plaster, wet area and high level MEP works in progress.

### DEVELOPMENT PROGRESS

40%

STRUCTURE

0.29%

INTERNAL FINISHES

**SOBHA**  
REALTY



# 350 RIVERSIDE CRESCENT



## DESIGN *to* COMPLETION

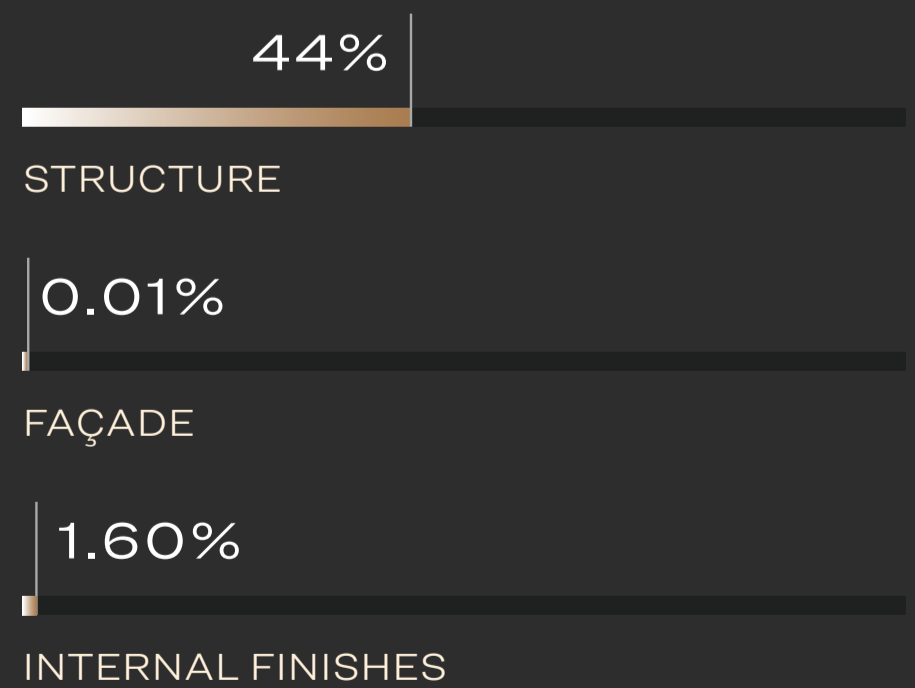
### Dear VALUED CUSTOMER,

We are excited to provide you with the latest update on the construction of your dream home at 350 Riverside Crescent.

Construction of the project is proceeding favourably well with Level 18 slab in progress along with level 19 and level 20 verticals in progress.

Facade works in progress. Blockwork & plaster along with wet area works and high level MEP works in progress.

#### DEVELOPMENT PROGRESS



**SOBHA**  
REALTY



# 360 RIVERSIDE CRESCENT



## DESIGN *to* COMPLETION

### Dear VALUED CUSTOMER,

We are excited to provide you with the latest update on the construction of your dream home at 360 Riverside Crescent.

Construction of the project is proceeding favourably well with Level 14 slab in progress while Level 16 and 17 verticals also in progress.

Works are yet to commence for the façade. Blockwork & plaster along with wet area works and high level MEP works in progress.

### DEVELOPMENT PROGRESS

34%

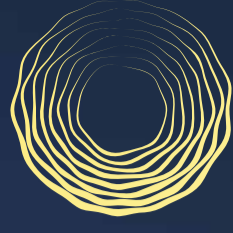
STRUCTURE

0.17%

INTERNAL FINISHES

**SOBHA**  
REALTY





SKYSCAPE



## DESIGN *to* COMPLETION

Dear  
**VALUED  
CUSTOMER,**

We are excited to provide you with the latest update on the construction of your dream home at the Skyscape Avenue, Aura and Altius.

Construction of the project is proceeding favourably well.

Tower raft completed in Tower A while P2 slab completed and P3 slab completed in Tower B. P1 slab completed with P2 slab in progress in Tower C. Façade and internal finished are yet to commence.

DEVELOPMENT  
PROGRESS

21%

STRUCTURE

**SOBHA**  
REALTY





# SOBHA RESERVÉ



## DESIGN *to* COMPLETION

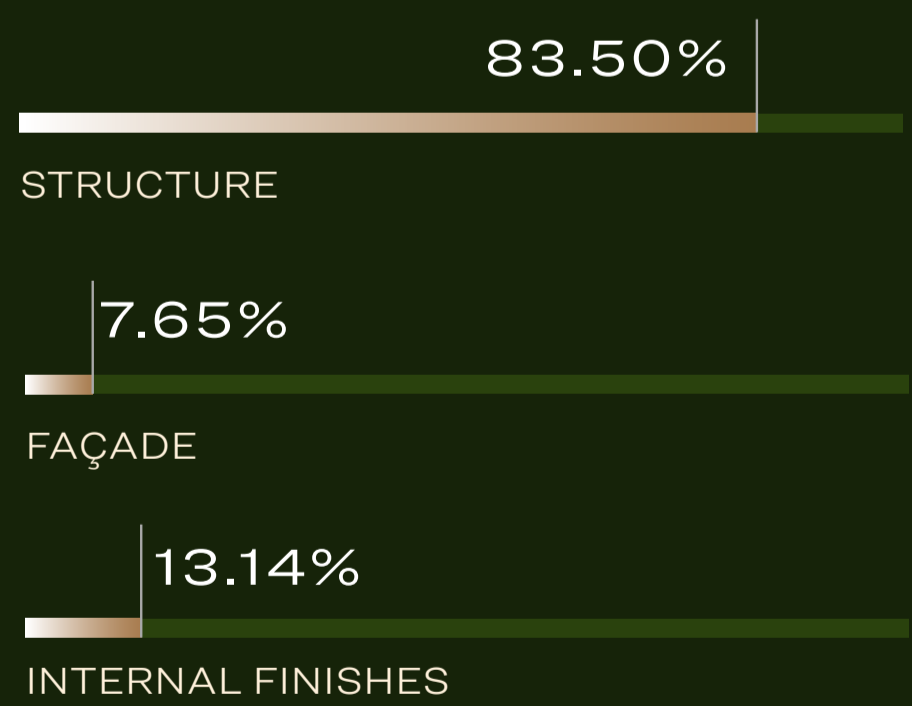
### Dear VALUED CUSTOMER,

We are excited to provide you with the latest update on the construction of your dream home at Sobha Reserve. Construction of the project is proceeding favourably well for villa series SRV-1 to SRV-76, SRV-78 to SRV-133, SRV-138 to SRV-174, SRV-201 to SRV-215, SRV-301 to SRV-322, SRV-401 to SRV-409, SRV-412 to SRV-431, SRV-501 to SRV-511, SRV-601 to SRV-611, SRV-622 to SRV-625, SRV-701 to SRV-736 and SRV 801 to SRV 826.

The excavation is completed in 323 Villas. PCC has been completed in 323 Villas, raft casting is completed in 322 villas, grade slab is completed in 317 villas, first floor is completed in 257 villas, Roof floors are completed in 237 villas, and Upper roofs are completed in 222 villas.

Internal façade works is in progress in 49 villas and external façade works in 1 villa with roof louver in 3 villas. Blockwork is completed in 134 Villas. Plastering is completed in 111 villas. MEP high level is completed in 70 villas, false ceiling has been completed in 53 villas, floor tiling is completed in 34 villas, joinery works in 1 villa and external works in 21 villas. Testing, commission, snagging for 1 villa.

### DEVELOPMENT PROGRESS



# SOBHA REALTY





## DESIGN *to* COMPLETION

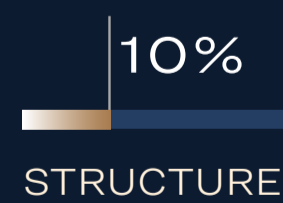
Dear  
**VALUED  
CUSTOMER,**

We are excited to provide you with the latest update on the construction of your dream home at the Sobha Orbis.

Construction of the project is proceeding favourably well.

Pile cap works in progress in Tower A while ground floor slab decking & rebar works in progress in Tower B. Piling breaking works in progress in Tower E. Excavation & pile breaking works in progress in Tower F. Excavation works in progress in Tower G. Façade and internal finished are yet to commence.

DEVELOPMENT  
PROGRESS



**SOBHA**  
REALTY

