



**TOWNX**

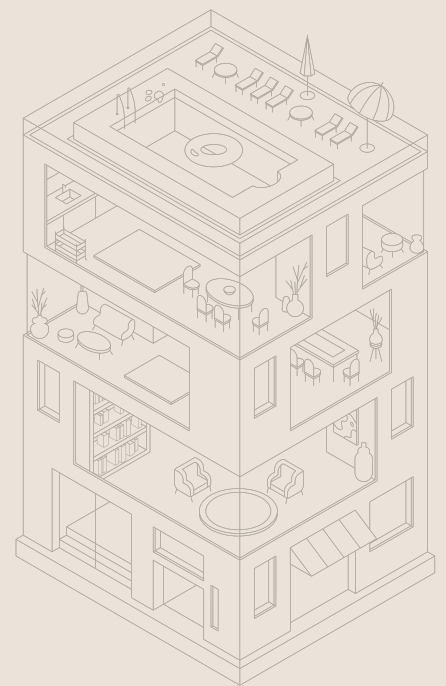
**TOWNX**

PROMISE. BUILD. DELIVER.

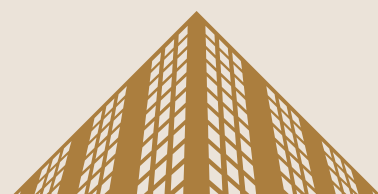


# A LEGACY OF INNOVATION

At TownX, we are trailblazers in real estate development, dedicated to delivering unparalleled experiences and setting new standards of excellence.



TOWNX

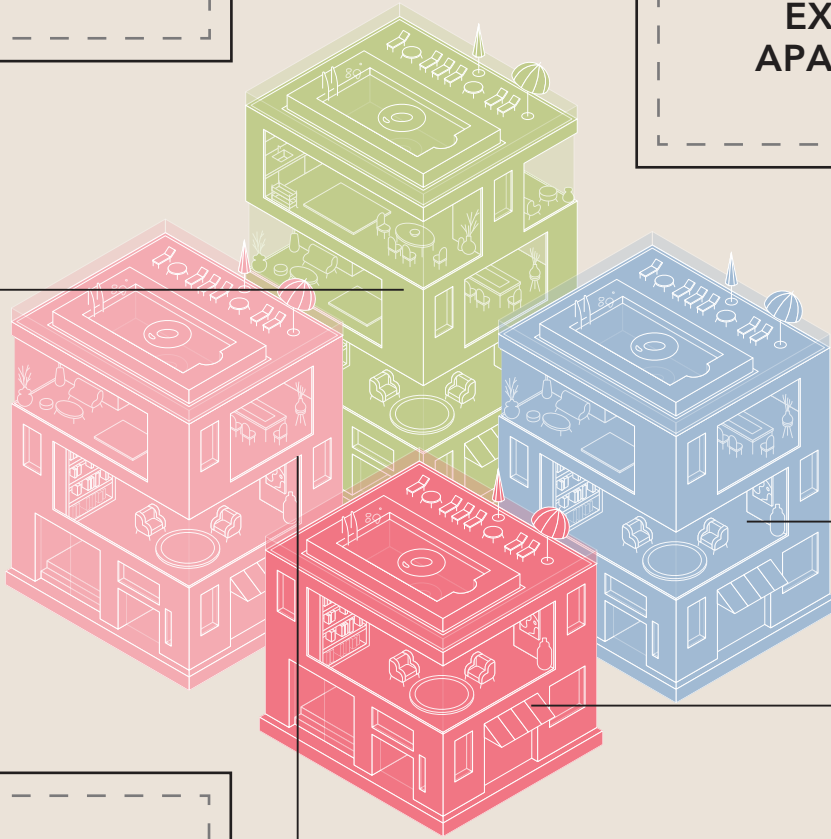


# A PROVEN TRACK RECORD

OUR SUCCESS SPEAKS VOLUMES.

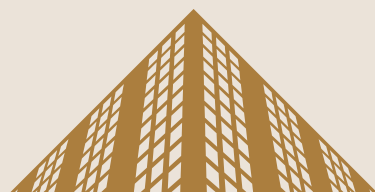
SINCE OUR  
INCEPTION IN  
**2017**

**967**  
EXQUISITE  
APARTMENTS



**1,036,000**  
SQUARE FEET OF  
PREMIER LIVING  
SPACE

**2,125**  
APARTMENTS  
CURRENTLY UNDER  
CONSTRUCTION



# DESIGNED WITH COMMUNITY IN MIND

AT TOWNX, WE PUT FAMILY FIRST.



Typical Gym example

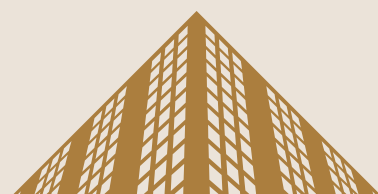


Easy18 delivered in 2019



Luma21 JVC delivered in 2022

Each project we undertake is meticulously designed to enhance your living experience. Our commitment extends beyond the confines of your home, ensuring a harmonious and aesthetically pleasing environment that caters to both your comfort and lifestyle.



# VALUES THAT DEFINE US

OUR CORE VALUES GUIDE EVERY ASPECT  
OF OUR WORK

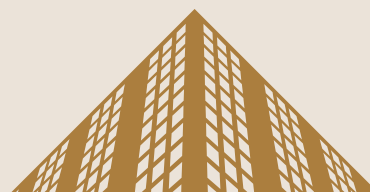
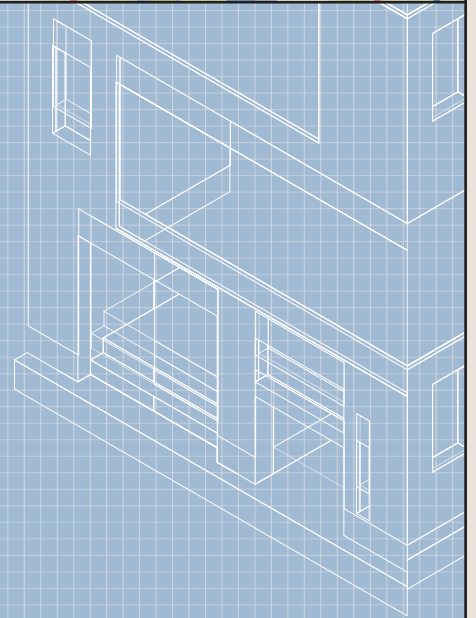
## USER EXPERIENCE

OUR TOP PRIORITY IS CRAFTING  
SPACES THAT ELEVATE YOUR  
DAILY LIFE.



## DESIGN & DELIVERY

WE EXCEL IN BOTH CONCEPTUAL  
BRILLIANCE AND FLAWLESS  
EXECUTION.

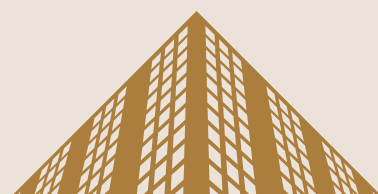


# MASTERING DESIGN & DELIVERY

At **TownX**, our dedication is evident in every phase of development, from initial design to the moment you step into your new home. Our expert team ensures that each project is executed with precision and efficiency.



Luma21 JVC, delivered in 2022



# CRAFTED FOR FAMILIES

## OUR DEVELOPMENTS

Are designed to be enjoyed by all ages.

## PREMIUM FINISHES

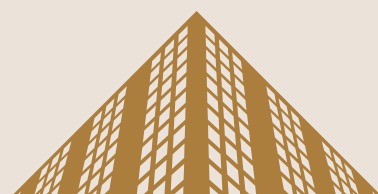
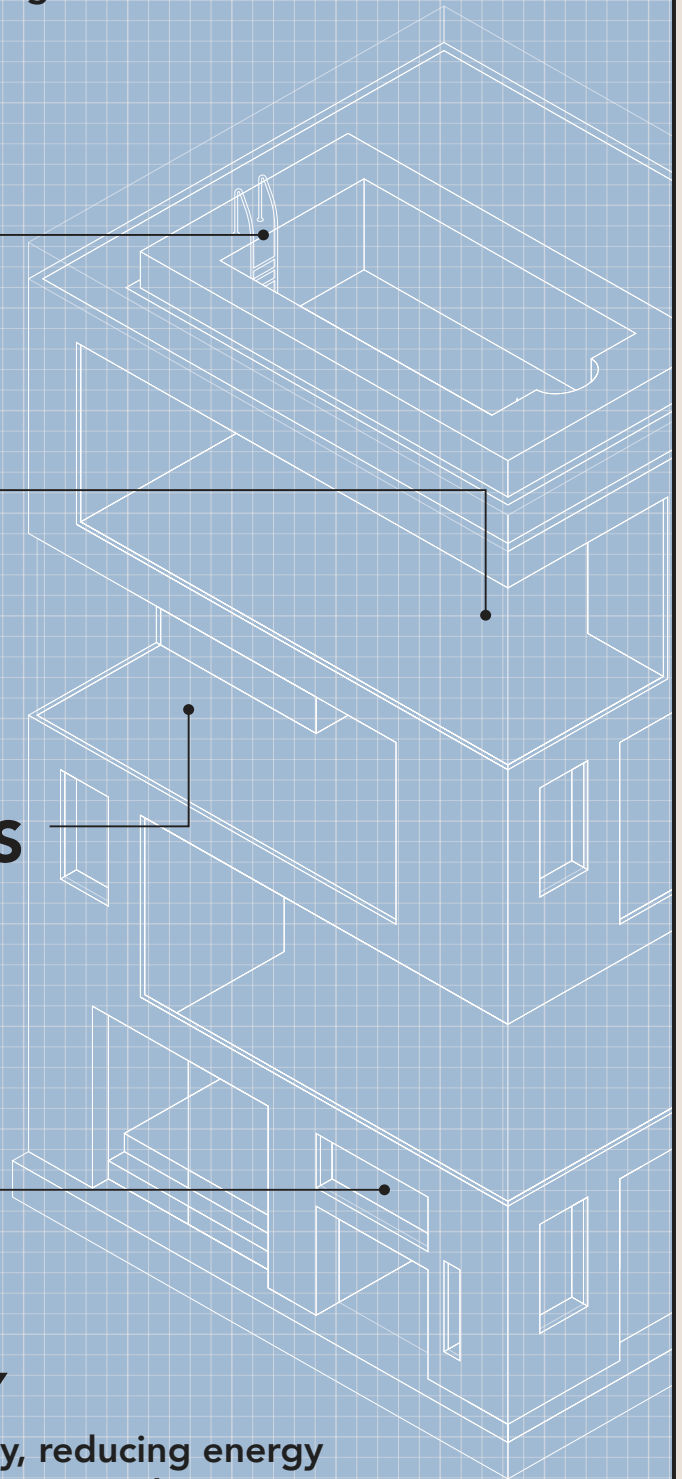
Only the highest-quality materials are selected to reflect superior design.

## BRIGHT, SPACIOUS INTERIORS

Large, thoughtfully angled windows fill each space with natural light.

## ENERGY EFFICIENCY

Our designs prioritize sustainability, reducing energy consumption and minimizing environmental impact.



# UNCOMPROMISING USER EXPERIENCE

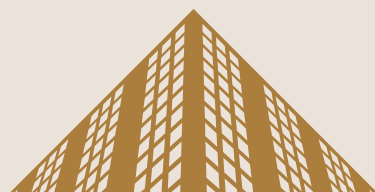
YOUR SATISFACTION DRIVES US.



Luma21 JVC, delivered in 2022

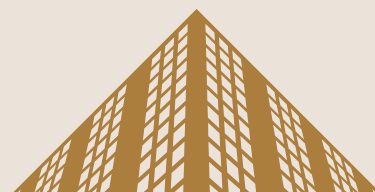
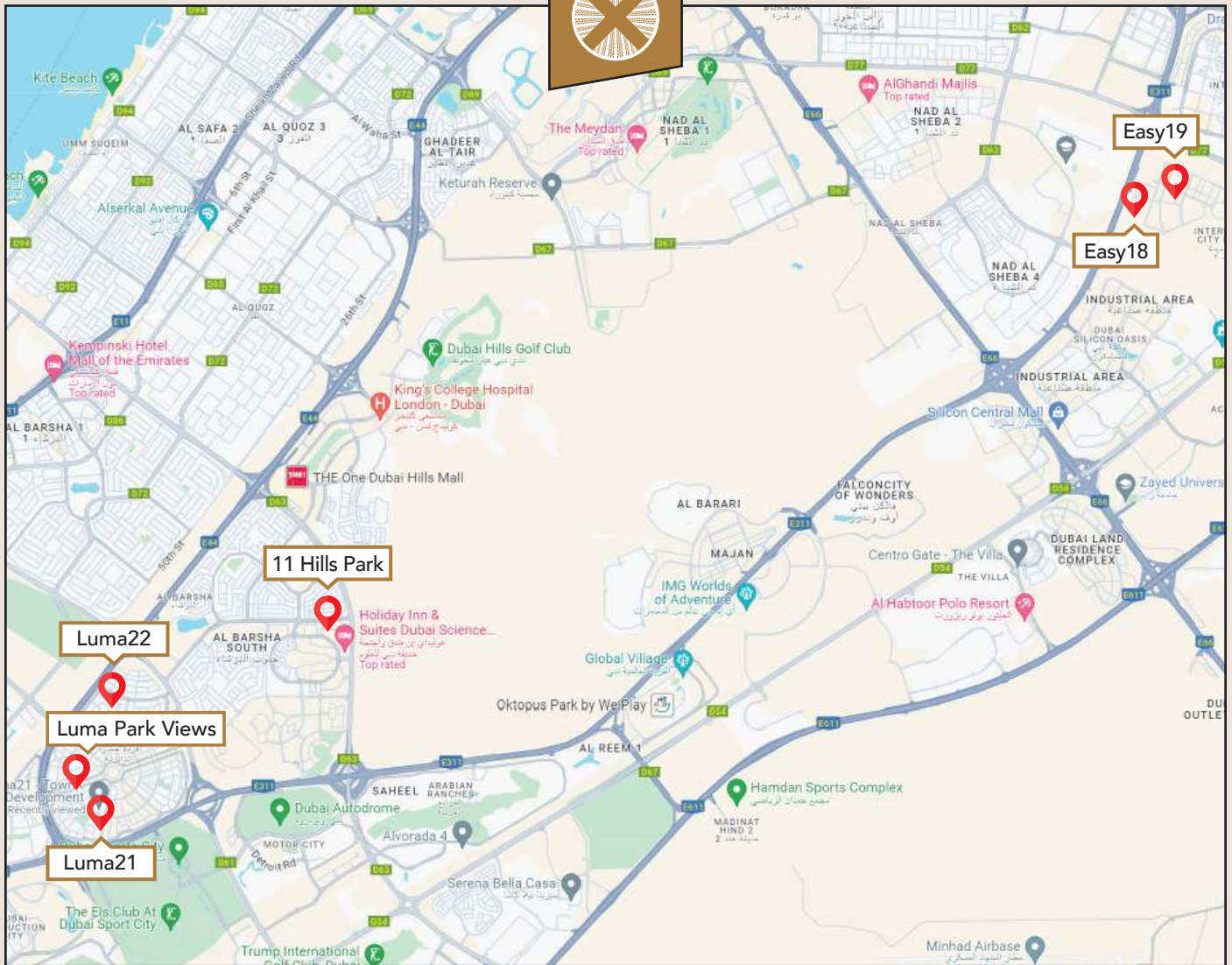
Every **TownX** development is crafted to offer exceptional comfort and convenience. Whether enjoying leisure time by the pool or invigorating workouts in our state-of-the-art gym, our premium apartments are tailored to meet your highest expectations.

From luxurious bathroom fittings to top-of-the-line kitchen appliances, **TownX** is synonymous with excellence in every detail.



# DUBAI-BASED DEVELOPER

From Dubai we offer best-in-class experiences in Jumeirah Village Circle, Al-Furjan and more.

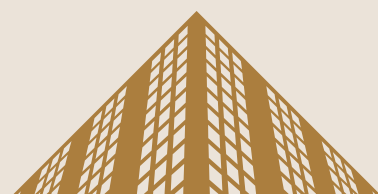
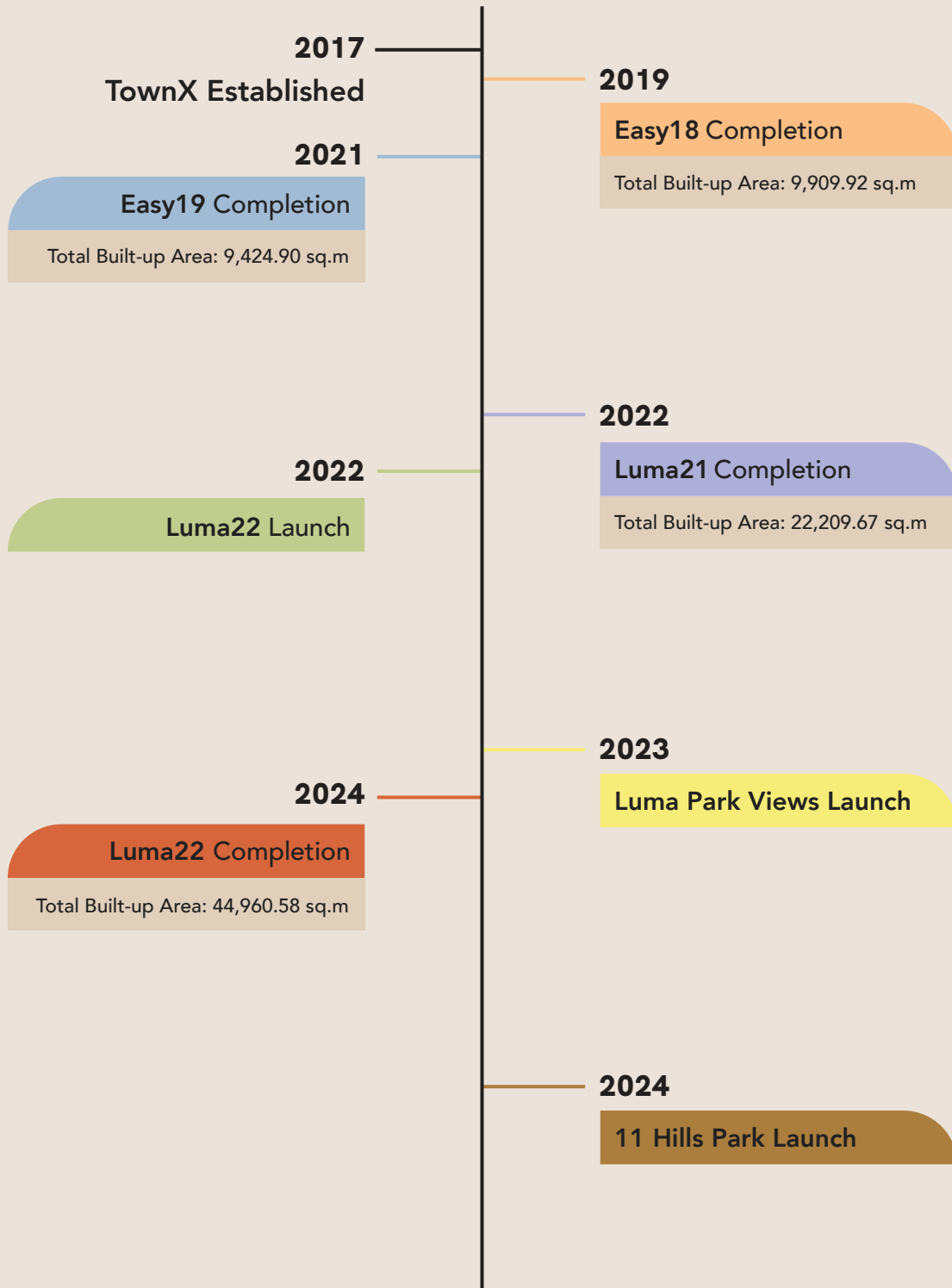


# OUR MILESTONES

Our projects are named uniquely.

Every TownX project is a community, and each name reflects a representative concept of the building.

The X of TownX means the infinite possibilities of our development that consistently provide the best in class buildings and solutions.



EASY  
18

EASY  
19

LUMA  
21

LUMA  
22

LUMA  
PARK  
VIEWS

11  
HILLS  
PARK

TOWN  
X





# TOWNX

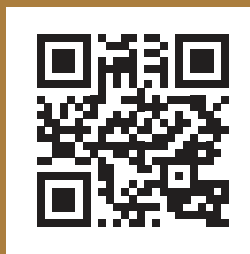
---

Office 1703, Level 17  
Boulevard Plaza Tower 1  
Downtown Dubai  
PO Box: 416653  
Dubai UAE

+971 800 86969  
[800 TOWNX]  
info@townx.com  
townx.com



townxcom



link to website

TOWNX

